

MISSION: MICRONESIA

INSIDE THIS ISSUE:

Ship's Log: Malakal Harbor	1
Open Ocean	1
Maintenance Matters	2
New Nav Equipment	2
Ministry Matters...	3
Photo of the Month: "Glorious Sunset"	4
Closing Thoughts "Still on the topside..."	

*"His plan
for us is
worth the
wait..."*



The open ocean between Palau and Papua New Guinea is seen in this photo from last month as we made our way south from our home port. The weather was very calm.

Ship's Log: Malakal Harbor, Western Pacific Ocean—Glen Knight

I see in our long-range forecast that all is quiet out here in what's called, the Western Pacific Basin. Typhoons that normally careen through our area every ten days or so are simply non-existent, at least for the present. They will come. They'll just be later gearing up, I reckon. At this writing, I'm looking at the hurricanes on the opposite side of our world in the Atlantic Ocean and am fully aware that our blessing is not shared by many friends and family members who live along the US eastern seaboard and Gulf coasts. The addition of widespread fires in California and unquelled violence in some American cities gives us reason to be distressed for our home country. And certainly the enormous disruption created by the viral pandemic with heated debates as to moving forward, all cause us to wonder what the future holds. Out here, we remain unable to travel to other ports to work as we had planned. Most everything seems to be in a stall. But I am sure that our supposition is very different from what God knows. His plan for us is worth the wait. In the meantime, we will go ahead doing all we can to advance His gospel without fear of the future. Faith is the key to the overcoming power of God's people.



Islands, distant and remote populated with people who need The Lord and the blessing of knowing that someone cares, are scattered across this wide ocean. We are here that they might know the saving grace of God. Thank you so much for your help in our efforts to reach them now and in months to come.

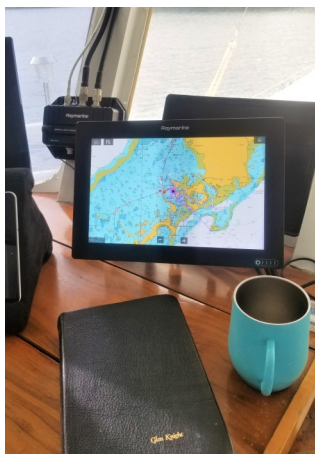
God bless you all!

Glen & Summer Knight



The Caterpillar has a nice appearance, despite being quite old. I am of the opinion that this is one of the best diesel engines ever built. I well remember in 2011 when I first saw it with our friend, Ricky Smith, Dierks, AR. I still have the video of Ricky cranking it. That sound has blessed my heart hundreds of times over through the years! Thanks, Ricky...

"Take care of your vessel, and she'll take care of you."



We recently upgraded our navigation system with the addition of a new AIS unit and Raymarine chart plotter, GPS and sonar.

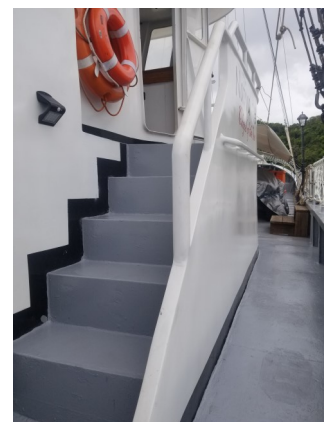
Maintenance Matters During C-19 Delay

There is an axiom that is almost an understatement for working the sea—Take care of your vessel, and she'll take care of you. Have a look at the photo to the right. That's our main engine. It's a vintage 1975 Caterpillar D-335. I was once told by a marine engineer that this was too old and too small to power the ship. He was wrong. Seven years on now, this big CAT is still amazing. Coupled with its Twin Disc hydraulic drive, it pushes the ship to her cruising speed of 8 knots with complete ease. And it sips diesel fuel. Within the past weeks, we have painted the old CAT and she looks new again. We're doing our best to care for this machine!



We recently installed a new autopilot in the bridge of NATIVA which aids us on the long ocean crossings. The photo on the left is of the large canister we manufactured for use as a reservoir for the hydraulic steering fluid, connecting to the helm pumps and the ship's big rudder. Inasmuch as NATIVA is a uniquely built vessel, there are very few off-the-shelf kinds of equipment that can be purchased and add to that, the remote part of the world where we work, one has to be able to manufacture or improvise all sorts of things to get the job done. I like that!

Painting the ship really never ends. It's just another of those things to be done not only to keep her looking nice but to preserve the vessel against the ravages of her saltwater environment. The photo at the right shows part of the painting we've just completed this week. The gray color on the deck and bridge steps gives NATIVA a clean and seaworthy appearance. She is now fully painted again from stem to stern. This will last about six months before having to be recoated, despite using a very high-grade marine paint.



"They approached our starboard side quickly, running on a right angle to NATIVA and much faster. One moment there was only a radar blip and almost the next, a large ship bearing down upon us within a quarter mile distance and closing. There was little I could do but maintain our course and speed and pray the other skipper would see us. Just as I reached for the radio microphone to alert the approaching vessel, she veered away and avoided us. It was the USNS City of Bismark. And she was big!" —Memoirs, GK

Ministry Matters During C-19 Delay

Reaching out to islands near and not so near, that are still within the Republic of Palau, is what we will continue doing. The photo at the right is of the load of cargo headed last month to Hatohobei State, way down south. We have a desire to reacquaint ourselves with the governors of Kayangel Island and those of Peleliu and Anguar in hopes of ministering to their people as well while we're still in this area. As a new year approaches and travel restrictions are lifted, we will make another attempt to travel eastward, farther into Micronesia as had been previously planned before C-19. We still have designated Bibles and mosquito nets for these islanders.



My assistant navigator for the afternoon, McCain from Tobi Island, says he will one day work on NATIVA. Time will tell, of course, but his mind is on the right track!



The photo to the left is of our Helen's Reef Ranger friends when we were with them last month. We conducted a worship and prayer time with them aboard the ship before we all left. I pray the ministry of the gospel among them will take root. This may have been the last time we see them in a long time but when we sail for New Guinea next year, we will pass by their atoll to see how they're doing. Help us pray for these three men among whom the Word of God has been taught. Their island is among the most desolate out here.

There is always great interest shown by the islanders when we draw up on their coasts. Those we know are happy to see us again and those we've not met are usually very curious to find out about us. Some have a bit of trepidation at first, not sure of our purpose and even their leaders are often wary. But when given the chance, we prove ourselves to be of honest intent, never threatening and always encouraging. The photo to the right is an example as our crewman, Jhobert cradles a small child in his arms to keep him safe while disembarking NATIVA. Please help us pray for these islanders. Thank you!



"Help us pray for these men among whom the gospel has been taught."



"Distance is not a barrier and neither are culture nor mannerism hindrances to the demonstration of love from God. They are a part of what makes the ministry of the gospel unique to all activities, as they are embraced and accepted in the light of universal appeal for salvation." —Memoirs, glen knight

A gift of coconuts from the islanders. They're fresh and always good!

Remote Island Ministries

A Ministry of
Victory Baptist Church
10000 Brockington Ave.
Sherwood, AR 72120
USA

Stateside Address:
REMOTE ISLAND MINISTRIES
Glen Knight, c/o Cheryl Clem
8101 Thames Ave.
Texarkana, TX 75503
USA

Field Address:
Captain Charles Glenn Knight
Summer C.E. Knight
The Sailing Ship RIM Nativa
P.O. General Delivery
Koror, Palau 96940

Email only:
glen@rimnativa.com

Cell: +680-776-6397

Email me:
glen@rimnativa.com



"Little Friends"

...Reaching people on the edge!

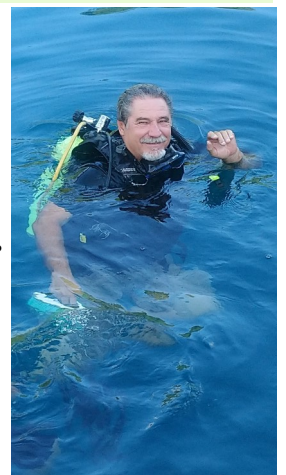


"Glorious Sunset"

In troublesome times, God reminds us of His promise of victory beyond the darkness!

Closing thought: Still on the topside...

It's all work. There's little more that can be made of it. Days begin early and end late and sometimes extend well into the night. And it never ends. Twenty-six years ago the efforts were embraced while my family and I lived comfortable lives elsewhere and since then, the work has continued. Some of us left off along the way for other pursuits and even a heavenly home, while others of us remained and a couple of us joined up in this life we have made, serving The Lord, loving one another and helping people far and wide with the love and grace of God. There's hardly a day that is ever the same, even in this most trying of seasons with closures and shutdowns and travel restrictions. There is little else to do than to stay the course and be patient. We will carry on, knowing The Lord is leading!



"More than a quarter century passed with an overwhelming abundance of blessing in life and still I am hard pressed to imagine how God, in His grace chose me for this work. There is no exceptional quality and certainly no outstanding ability that could have been the criteria upon which He made His choice. But then, I am reminded that it isn't what we are but what He makes us to be that arbitrates between or among us all in the Almighty's plan." —Memoirs of a Missionary, glen knight